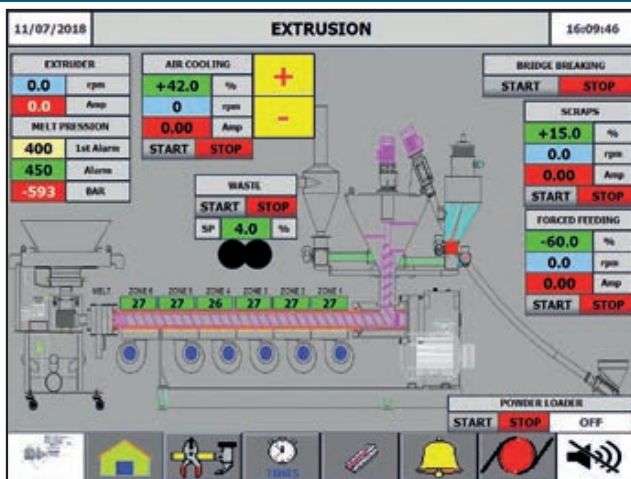
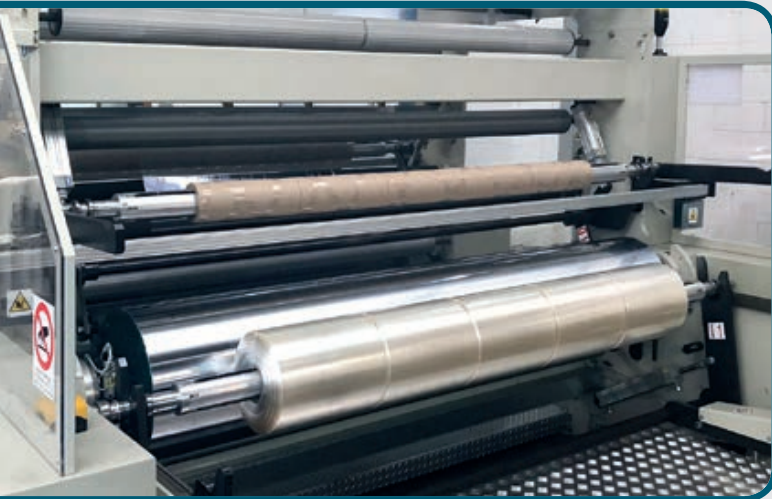


# PVC Cling film Lines

**BLOWN FILM EXTRUSION TECHNOLOGY**



## PVC CLING FILM EXTRUSION LINES - FEATURES

**RL PLASTPROJECT** extrusion lines produce high quality rolls of PVC Cling film. Accompanying the lines comes also the complete know-how to operate them and the complete formulation including PVC, plasticizer and additives to make high-grade PVC Cling film.

- Lines completely preset to Industry 4.0 technology
- Automatic supervision and remote control of all parameters of the working process
- Able to handle Dry-blend or Granule as raw materials
- Automatic Dry-blend/Granule loading
- Automatic management of line speeds
- Thicknesses range 7-20  $\mu$  and 7+7 $\mu$  double-layer to improve the mechanical properties of the film
- Automatic Edge-Trims complete recovery system directly in line
- Scraps complete recovery
- Fume take-away system
- Other configurations of the lines upon customer's request

## PVC CLING FILM APPLICATIONS

**PVC Cling film** is one of the safest and most widely used material for food packaging. It is suitable for automatic machine and hand wrapping applications:

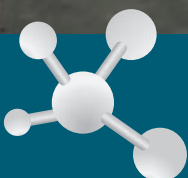
- Poultry, fresh meat, fresh fruit and vegetables, cheese, fish on trays
- Irregularly shaped packages

## RL PLASTPROJECT PVC Cling film extrusion lines are available in three versions

Lines engineered to the process in Industry 4.0

		TR100	TR120	TR120 PLUS
Single Screw Extruder		L/D30	L/D30	L/D30
Screw diameter	mm	100	120	120
Maximum output	*kg/h	140	250	350
Film Thickness	μ micron	7 - 20	7 - 20	7 - 20
Film Thickness Double Layer	μ micron	7+7	7+7	7+7
Maximum Film width	mm	1400	1850	2100
Winder		Automatic double Winding Stations	Automatic double Winding Stations	Automatic double Winding Stations
Control Panel		PLC SIEMENS	PLC SIEMENS	PLC SIEMENS
Maximum Speed on Winder	mt/1'	up to 160 mt/1'	up to 160 mt/1'	up to 160 mt/1'
Maximum Diameter on Winder	mm	400	400	400
Multiple Rolls	up to	4+4	5+5	7+7
Airshaft Diameter	mm	74 (3")	74 (3")	74 (3")
Average Power Consumption	kW	90	120	140

\* Production capacity depends on raw materials , widths and thicknesses



**RL PLASTPROJECT s.r.l.**

Via Delle Tre Campane, 10/C - 20010 Vanzago (Mi) Italy  
 Ph. +39 0293543344 - Fax +39 0293543344  
[www.rplastproject.it](http://www.rplastproject.it) - [info@rplastproject.it](mailto:info@rplastproject.it)

Visit us on:



Linked in

